

How to get to the venue

MID Town Meeting and BusinessCenter

Ungargasse 64-66
1030 Vienna

from the airport

If you want to go to **MID Town Meeting and BusinessCenter** directly, we recommend to take suburban train **S7** to "**Rennweg**" station (CAT, City Airport Train goes directly to "Landstraße/Wien Mitte" station, but you need a further ticket to get back to the venue – see "*from the city/suburban trains*" below).

from the city

MID Town Meeting and BusinessCenter can be reached by either

- suburban trains **S1, S2, S3, S5, S6, S7** and **S9**. Just get off at "**Rennweg**" station

how to get to suburban trains:

take underground **U1** or **U2** to "**Praterstern**" station or underground **U3** or **U4** to "**Landstraße/Wien Mitte**" station

- or tramway **71** from the city to "**Rennweg**" station.

The venue itself is located in the building above the suburban train station "**Rennweg**" (see pictures on the right):

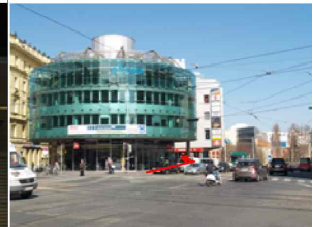
by suburban trains
take exit "Rennweg" ...



... then the escalator ...



by tramway "71"
right behind the round building you can find the entrance (see picture below) ...



... enter the building

